



"Today Tomorrow And Forever" **2021-V1**



Truly global
company with
export to more
than 70
countries.



Leading supplier
of interconnect
solutions, cable
assemblies,
telecom/datacom,
lighting &
medical solutions.

Strongly
positioned in
various markets,
providing the
widest range of
solutions.


Research and
development
activities fulfilled
in hi- tech
environment,
always aiming
innovation and
unique product
designs.





1990

Former company **Elektromar** started connector sales&distribution



2003

TTAF cable assembly factory was established.
TTAF first started producing TV cable assemblies.



TTAF Elektronik San. Tic. Ltd. Şti
Headquarter, factory, warehouse
İstanbul-Turkey
6000 SQM



2015

TTAF launched into lighting applications.

TTAF Export sales started.

TTAF China organization was set up.

Plastic injection line was set up in TTAF Istanbul facility.

The medical sector was initiated in our Istanbul TTAF company.

Ankara sales office

TTAF Electronics Manufactory Co. Ltd.
Sales and Sourcing Office
Shenzhen-CHINA



2006



2014



2019



Turkey Organisational Structure



Activities Performed

- 6000SQM Closed Area
- Five Production Lines; Telecommunication, Lighting, Consumer, Medical & Industrial
- Technical Support & Engineering
- Domestic Sales & Marketing
- International Sales & Marketing
- Warehousing
- R&D

CHINA > SHENZHEN

China Organisational Structure



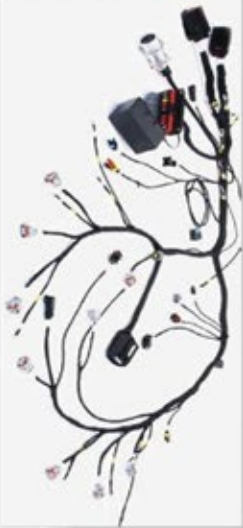
Activities Performed

- Sales
- Sourcing
- Domestic & Export Sales
- Logistics



Truly global company with export to more than 70 countries.

**Cable
Assemblies**



**Overmolded
Cables**



**Box
Builds**



**Network
Solutions**



Lighting



**Waterproof
Interconnect
Solutions**



Medical



PRODUCTION CAPABILITIES

Ultrasonic Welding



Fiber HDMI



FiberCrimp Machine



Vertical Processing Cnc



R & D



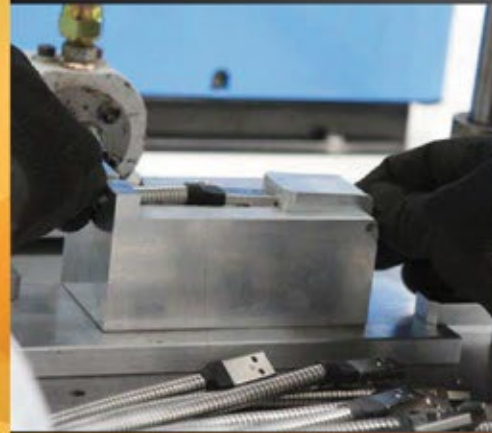
3d Printer



Cable Cutting & Stripping Machine



Low Pressure



Cable Stripping Machine



Soldering



Pad Printing



Capabilities

PRODUCTION CAPABILITIES

Lazer Cutting



Automatic Cut & Crimping



Lazer Cut & Stripping



Fiber Polish



Fiber Stripping



Automatic Under Cut
Profile Cutting



Universal Milling



Capabilities

TEST CAPABILITIES

Pressure Test Tank



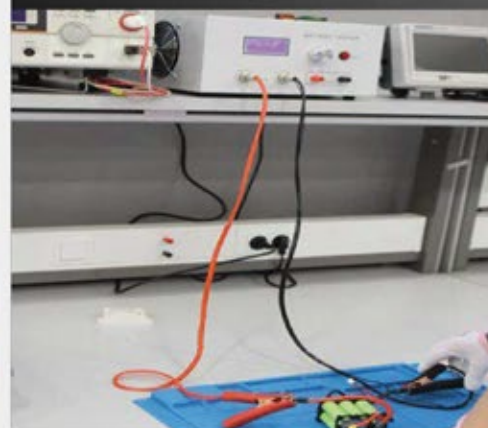
Humid & Temp
Programmable Tester



Electrical Test



Battery Test



UV Test Cabinet



Water Spray Test



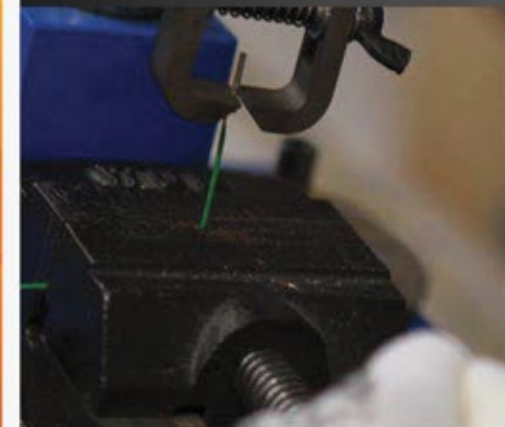
Sand and Dust Test
Chamber



Compression Test



Terminal Pull Test



Our quality management system is certified in accordance with
ISO 9001:2015, ISO 14001:2015, 18001:2007; standards.

Quality

HSE (Health, Safety, Environment)

- Periodic controls of lifting vehicles
- Periodic health controls
- Using of protective equipment
- Waste management
- Training



Product Certificates

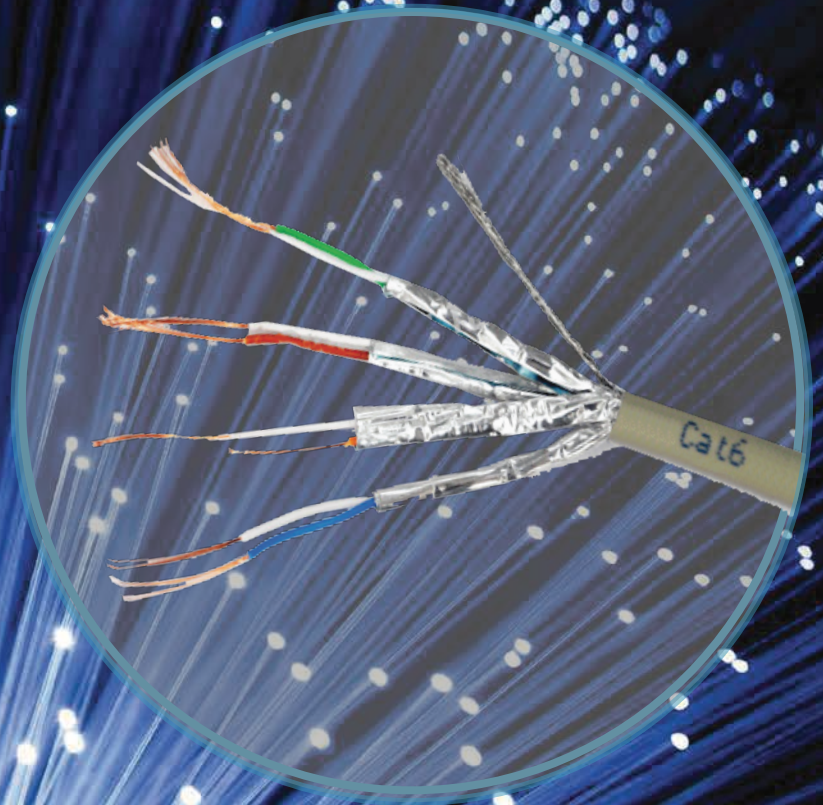


TELECOMMUNICATION & CABLING SYSTEMS

Fiber Optic



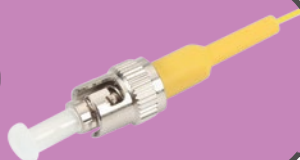
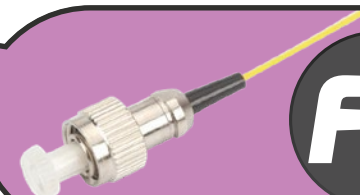
Copper Wire Cable



PIGTAILS

Networks including Ethernet, Fast Ethernet and GBE

- » Internal inter-connect
- » Ideal for a wide range of telecom, datacom and process control applications where ruggedisation is required
- » Suitable for repeated handling in patch panels and racks

ST**MU****SC****MTRJ****LC****FC**

UL 94
V-0

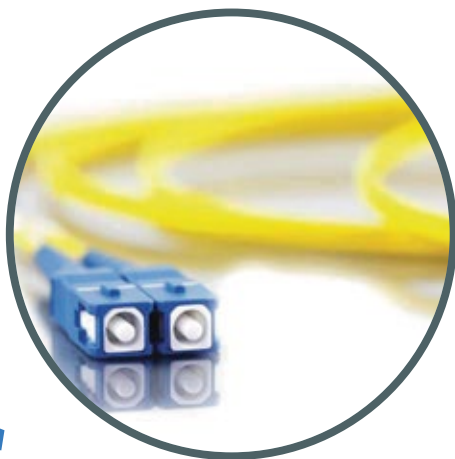
Low
Ins.
loss

High
quality

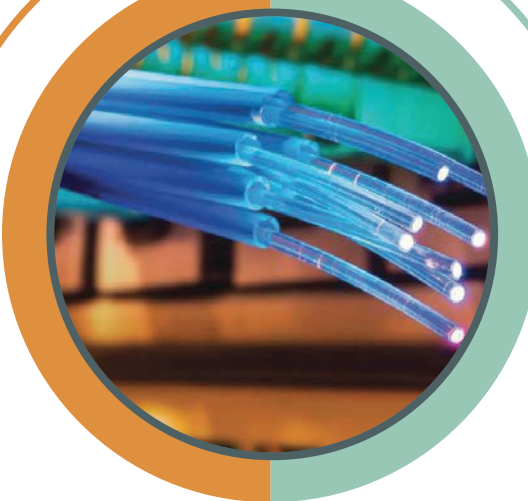
LS
ZH

PATCHCORDS

TTAF perfected fiber optic patch cords to the following connectors: *SC, LC, FC, ST, E2000*
TTAF is a leading supplier of advanced fiber optic components. Our extensive product offering includes a full range of solutions including
Connectors and Adapters, Assemblies, Termination Kit sand Tooling.

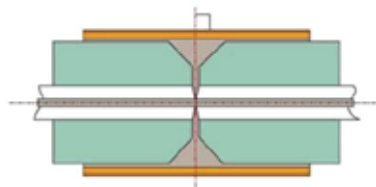


PC

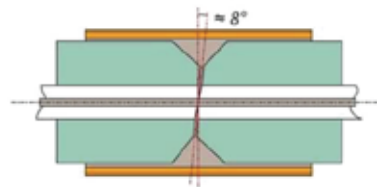


APC

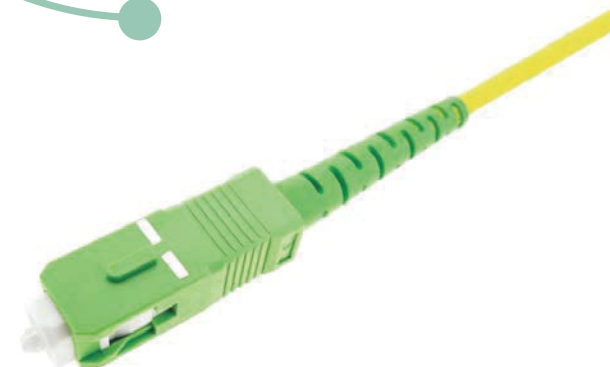
■ PC - Physical Contact



■ APC - Angled Physical Contact



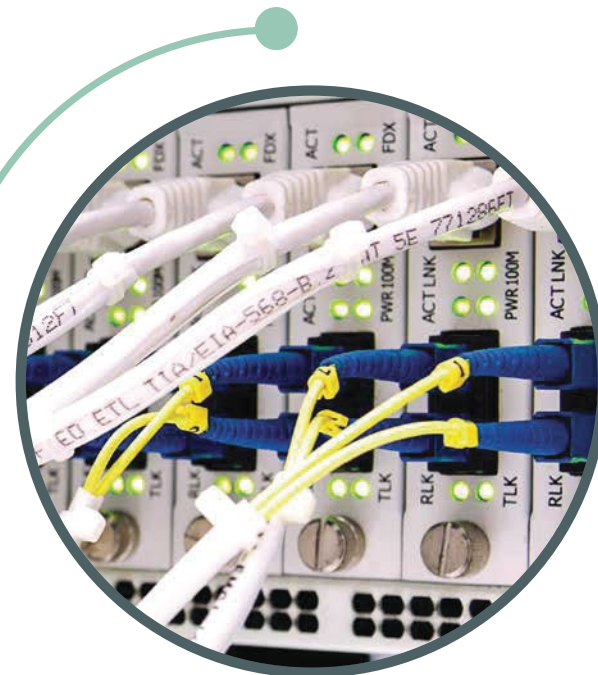
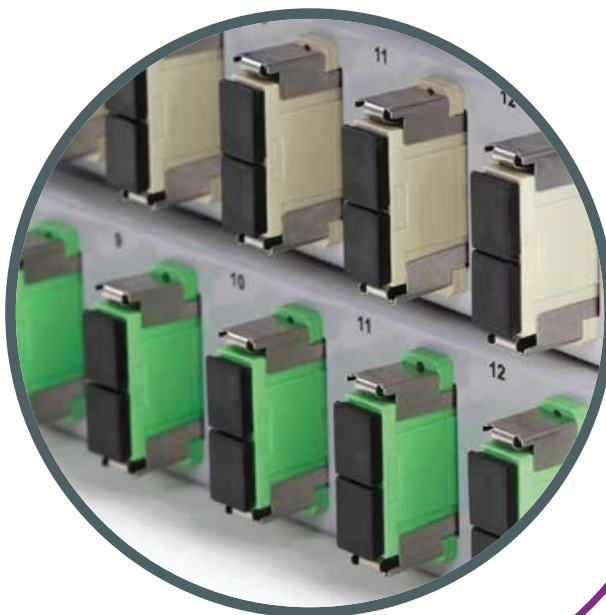
■ The angle reduces the backreflection of the connection.



ADAPTERS

TTAF fiber optic adapters have a name for its stability, they provide reliable solution for fiber connections.

TTAF adapter high quality raw materials and make these fiber optic adapters stricly according to international standard, this makes our fiber optic adaptors fully compatible with leading product on local market.



SC ADAPTERS

LC ADAPTERS

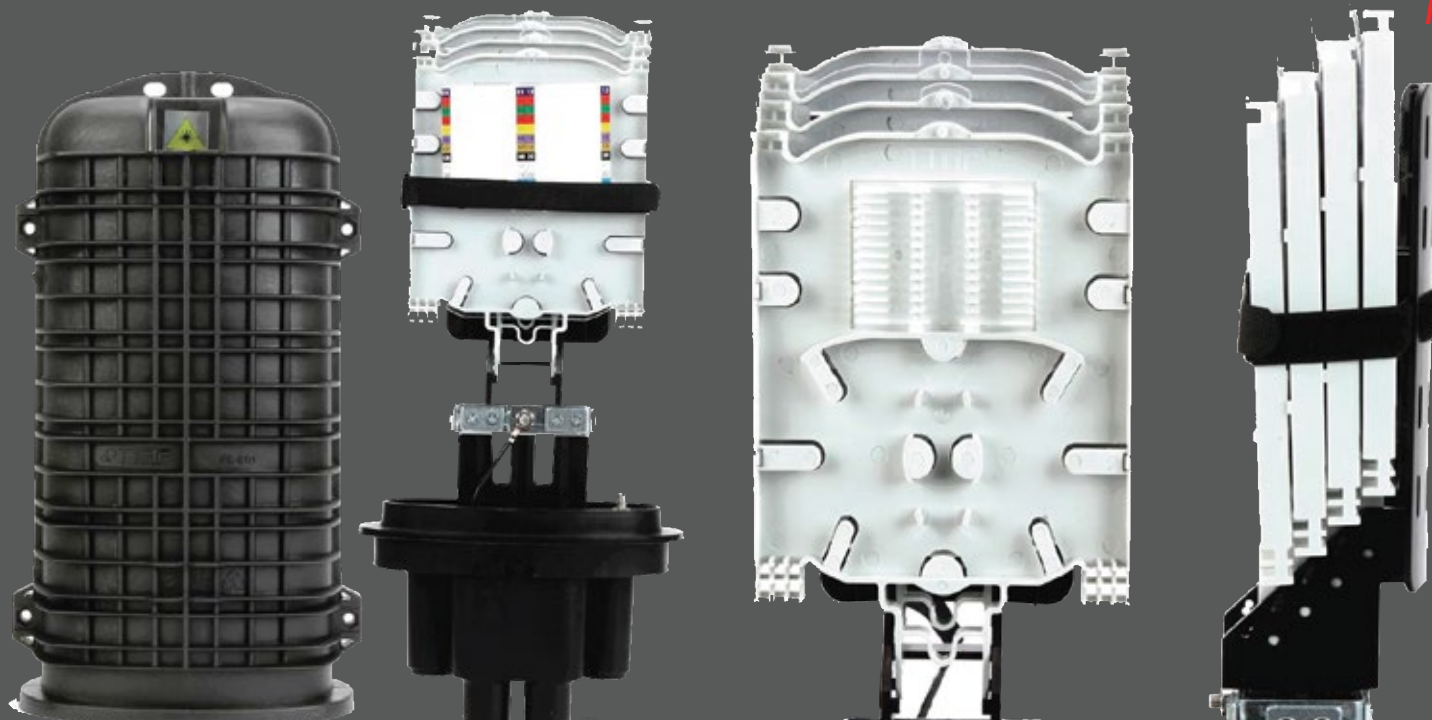
FC ADAPTERS

ST ADAPTERS

E2000

FIBER OPTIC ENCLOSURES

FIBER OPTIC ENCLOSURES



**LEADING PRODUCT
ON LOCAL MARKET**

TTAF's Splice Closure Sealed Fiber Distribution Closure is a compact and flexible closure that provides secure connections between fiber optic cables. Our closure solutions can be mounted to support aerial, buried and underground applications and provides reliable sealing performance. Fiber splicing point protected in a ribbed polypropylene dome that has high mechanical and environmental features. With its variable entry ports, the closure is applicable to in-line or mid-span branching method. The unique design of TTAF's splice closures supports the needs of discrete and varied deployment options and provides for rapid network installation and service



PLASTIC ODB BOXES

TTAF's outdoor fiber wall mount distribution boxes are designed to offer the most flexible solution for all FTTx networks. Suited to pole or wall mounting the all in one flexible distribution box is the ideal.

1/2

PORT WALLMOUNT TYPE

2/4

PORT WALLMOUNT TYPE

4/8

PORT WALLMOUNT TYPE

8/16

PORT WALLMOUNT TYPE

12/24

PORT WALLMOUNT TYPE

16/32

PORT WALLMOUNT TYPE

PLASTIC TYPE (LOADED)

FIBER OPTIC PATCHPANELS

Fiber Optic Patchpanels

METAL MODULE TYPE

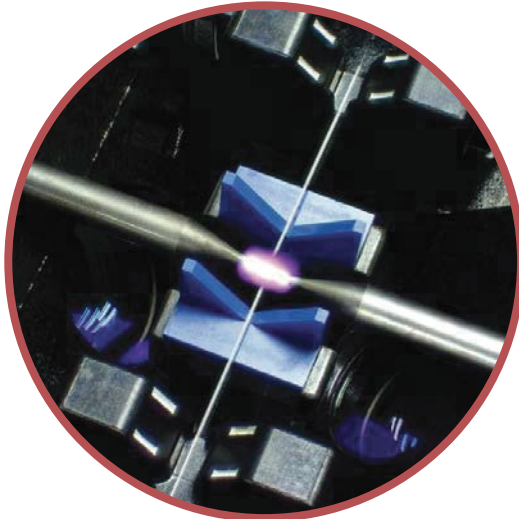


PLASTIC MODULE TYPE



FIBER OPTIC PATCHPANELS

Fiber Optic Patchpanels



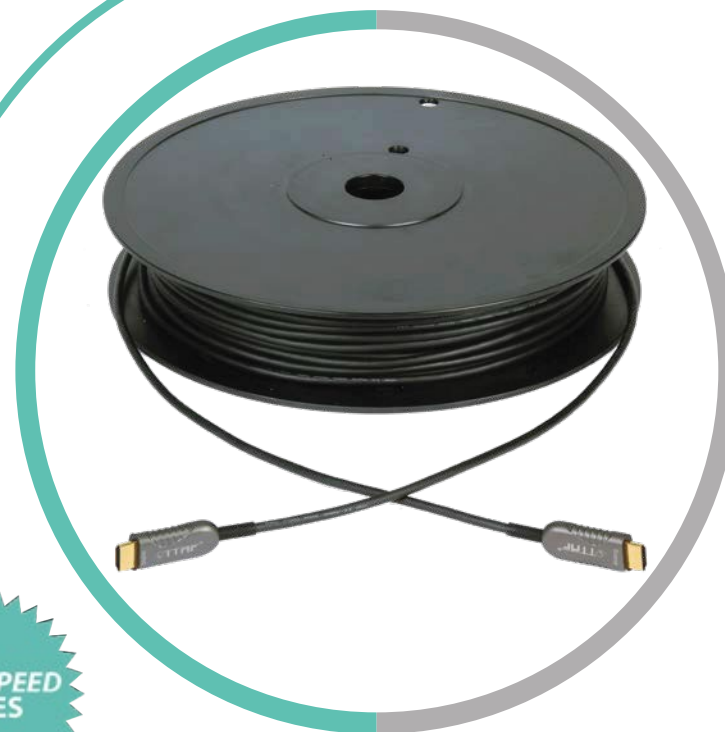
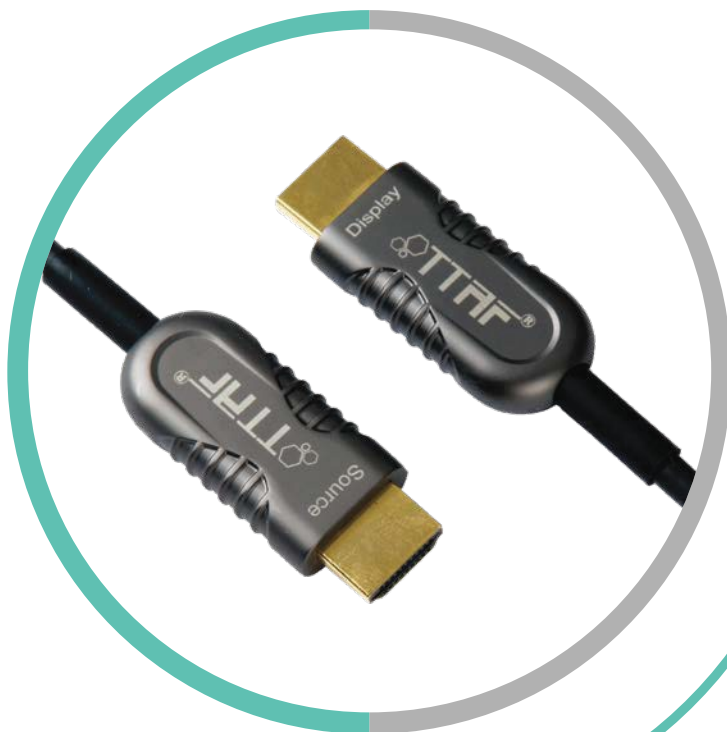
The TTA Fiber Optic Termination Boxes are used to terminate cable system and premise fiber network.

Each fiber optic and distribute optical fiber cables, termination box is ranging termination box is fully loaded with adaptors, splice trays and from 12 ports to 216 ports. They have convenient equipment accessories and are ready for installation. TTA supplies various solution to organize and connect the fiber optic links. It is suitable for kinds of sliding type fiber optic patch panels with different the use in telecommunication network, central office optical adapter interface.



FIBER HDMI

HDMI V_{2.0} ACTIVE OPTICAL CABLE



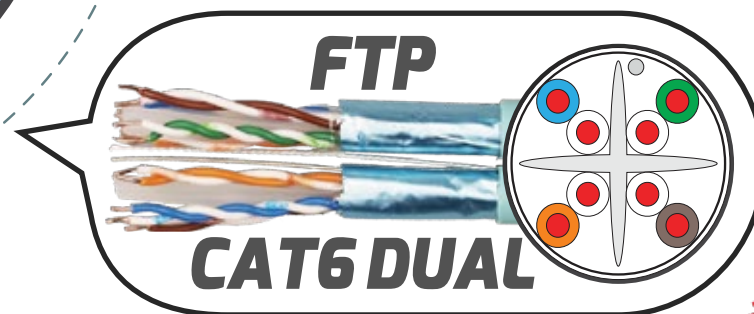
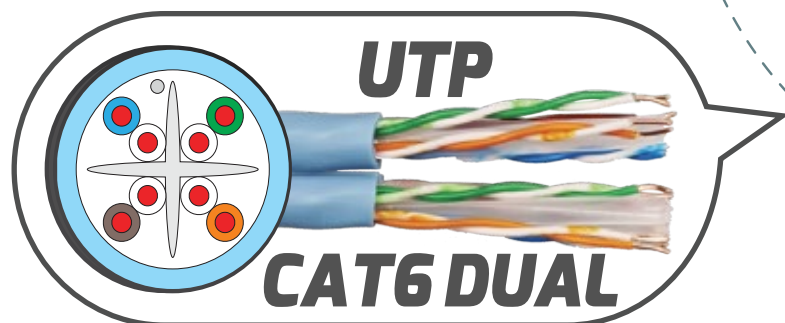
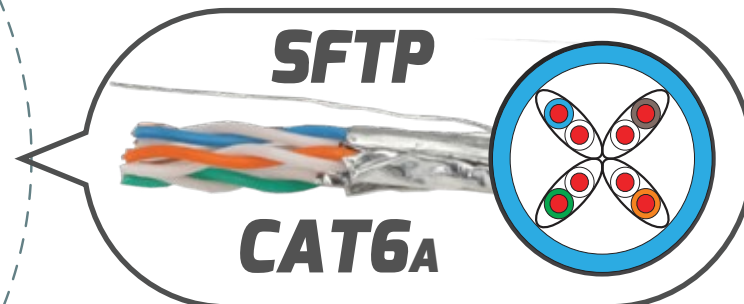
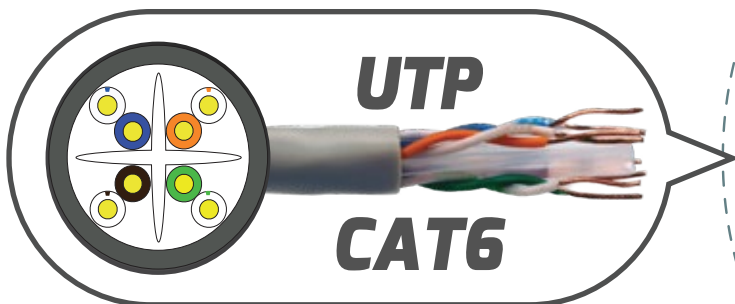
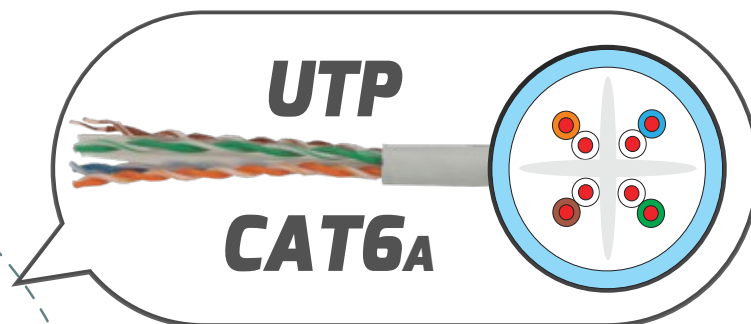
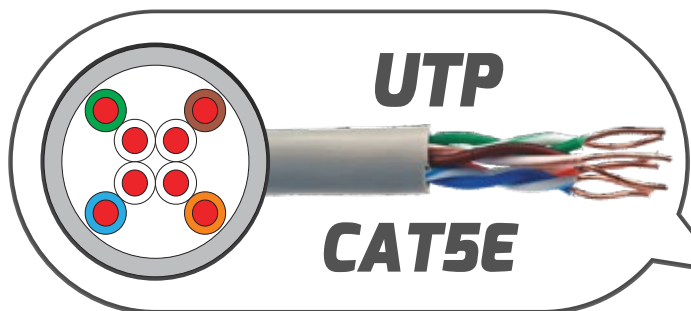
HYPERSPEED
SERIES

Application

- Digital Signage
- LED signboards in streets and in stadiums
- Medical Imaging Equipment
- Airplane On-board Video System
- Home Theater
- TV Broadcast Station
- Conference Room Video Equipment
- Security systems

LAN CABLES

TTAF provides an extensive range of networking installation cables, from Cat5e to Cat6a, and from domestic to industrial LAN cables, together with their patch cords.



PATCH CABLES

Cat x Patch Cable meets or exceeds all Category x cable specifications to ensure reliable Gigabit network connections, and features a durable PVC/LSOH/LSFROH and NON-PLENUM jacket that enables you to color code your network cable runs as needed. Stranded and solid copper conductors in cable pairs. Third party certification at a component level.

**CAT5E
UTP**

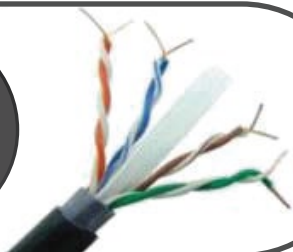


UTP

UNSHIELDED TWISTED

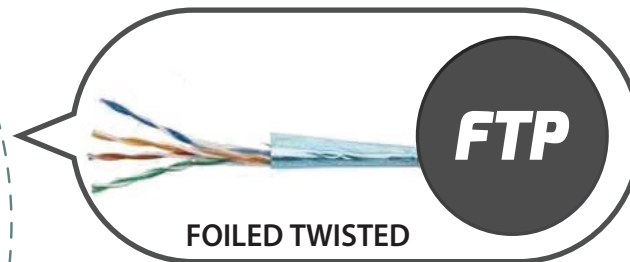


**CAT6
UTP**



FTP

FOILED TWISTED

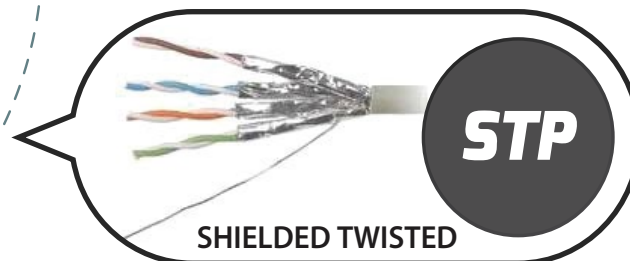


**CAT6_A
FTP**



STP

SHIELDED TWISTED

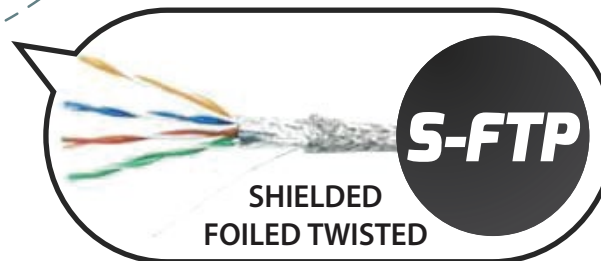


**CAT7
S-FTP**



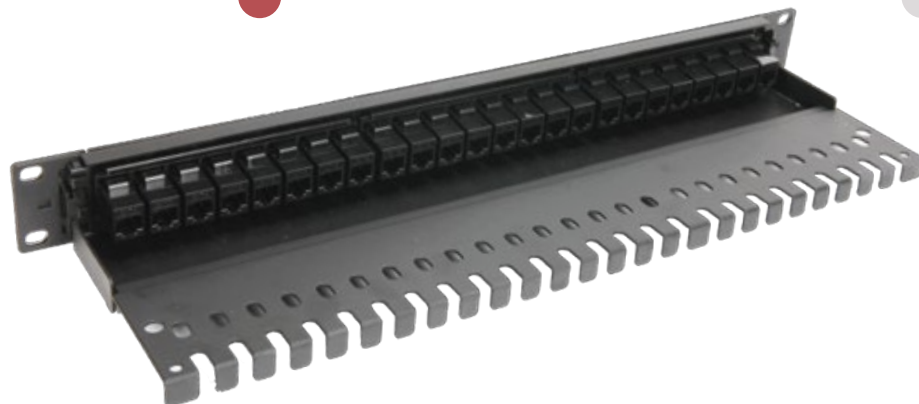
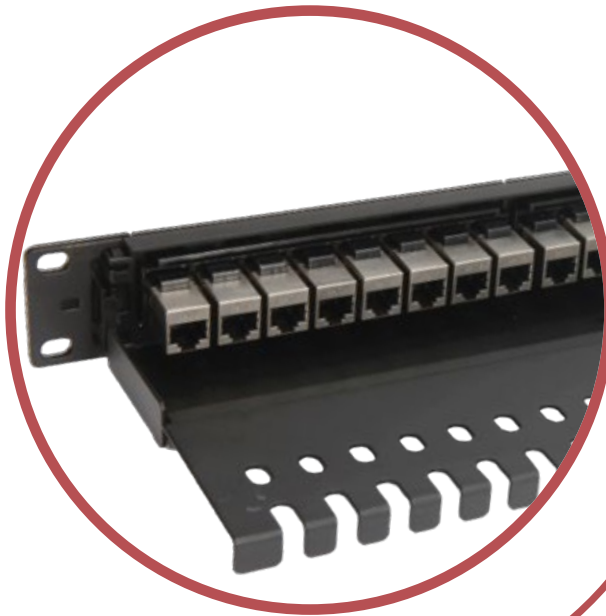
S-FTP

SHIELDED
FOILED TWISTED



PATCHPANELS

PLASTIC MODULE TYPE



METAL MODULE TYPE



KEYSTONE JACKS

TTAF's modular jacks are designed to work with 110 and Krone termination tools. Keystone jack is available in a 90 and 180 degree termination design, with wiring diagram and conductor protection cap.

CAT5E



180°



**CAT6_A
UTP**

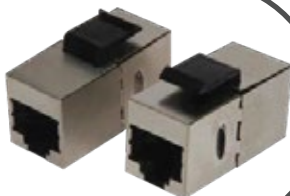
CAT6



**CAT6_A
FTP**



CAT6_A



**CAT6_A
STP**



CAT 7

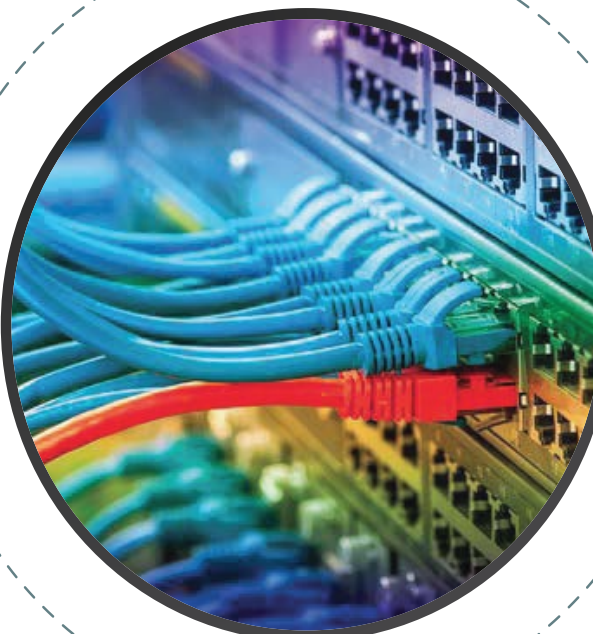


180°

**CAT6_A
FTP**



180°



ACCESSORIES

UTP



**CABLE
LABEL**



FTP



**RJ45
COLOUR
BOOT**



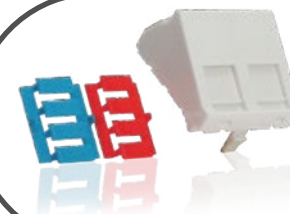
**FACE
PLATE**



**FRAME
STP**



**ANGLED
DOUBLE
PORT**

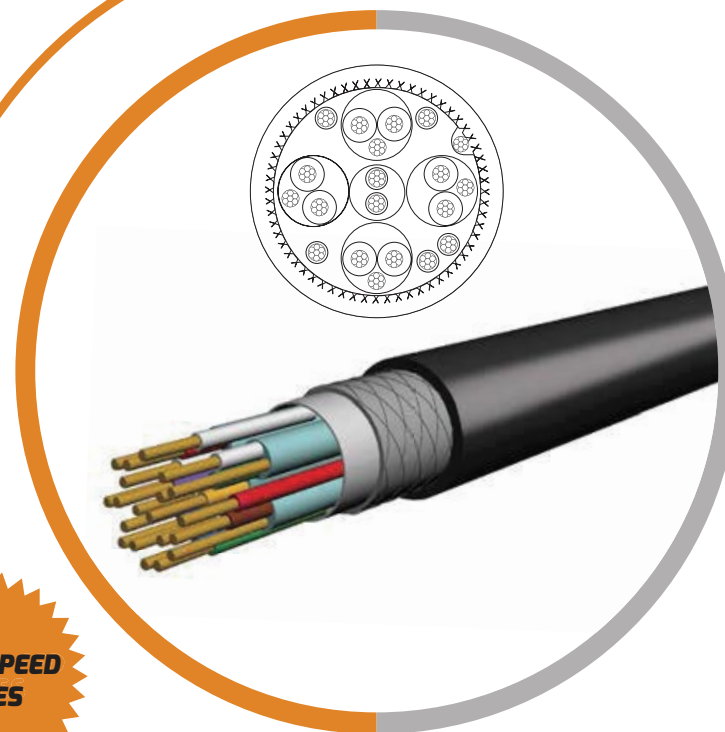


**CAT
6/5E
FRAM**



COPPER HDMI

HDMI™ CONNECTOR TO HDMI™ CONNECTOR



HYPERSPEED SERIES

Overview

- » HDMI cable, HDMI type A plug-HDMI type A plug
- » Cable: Triple shielded oxygen-free copper cable
- » Conductor: 99.99% oxygen-free copper
- » Outer jacket: PVC
- » Connector: 24K gold-plated
- » Insulator: Aluminum foil shielding and foam polyethylene dielectric insulator
- » Supports 3D Technology: Defines input/output protocols for major 3D video formats.
- » 1920x1080 Full HD support

