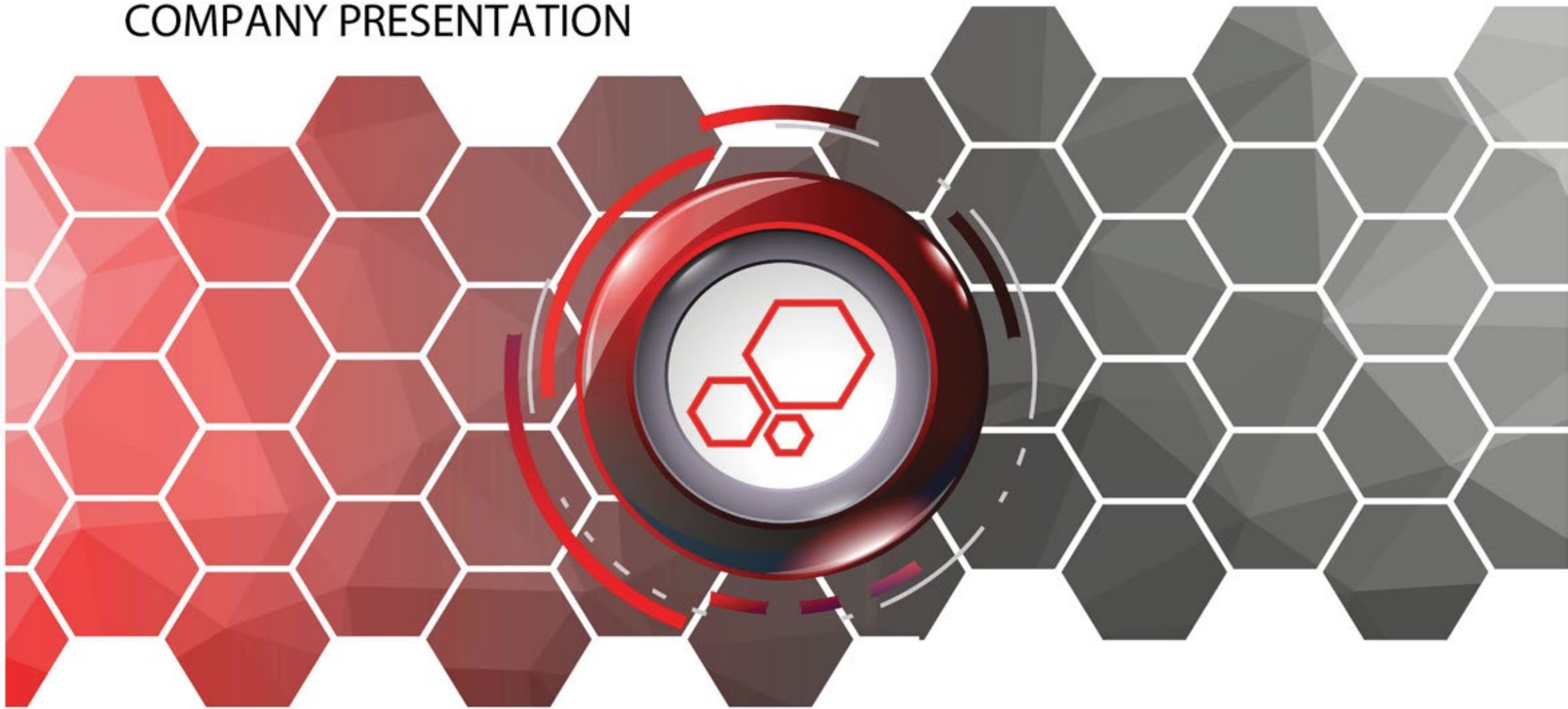


# COMPANY PRESENTATION



"Today Tomorrow And Forever" **2021-V1**



Truly global  
company with  
export to more  
than 70  
countries.



Leading supplier  
of interconnect  
solutions, cable  
assemblies,  
telecom/datacom,  
lighting &  
medical solutions.

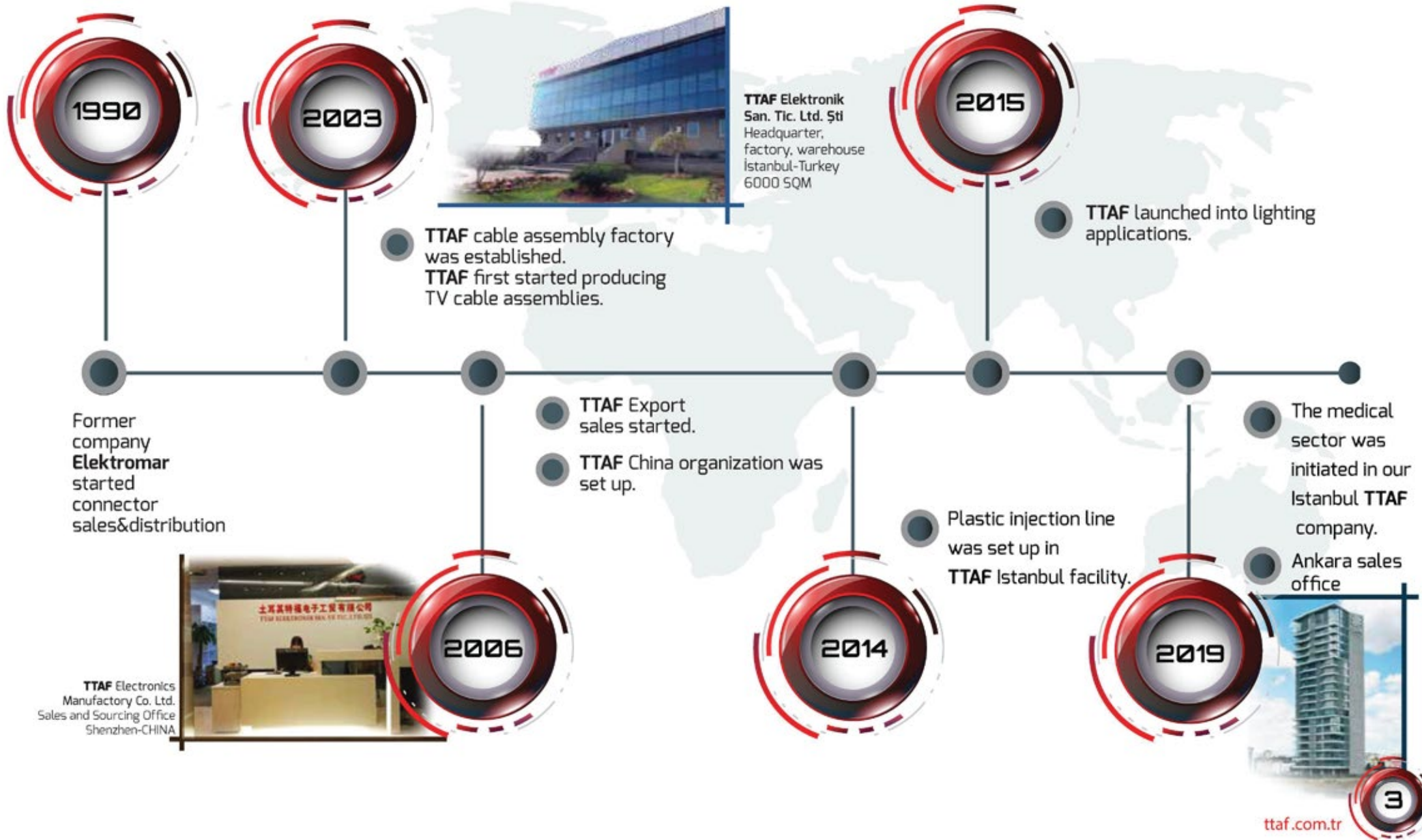
Strongly  
positioned in  
various markets,  
providing the  
widest range of  
solutions.

  
Research and  
development  
activities fulfilled  
in hi- tech  
environment,  
always aiming  
innovation and  
unique product  
designs.

 **TTAF**







### Turkey Organisational Structure



### Activities Performed

- 6000SQM Closed Area
- Five Production Lines; Telecommunication, Lighting, Consumer, Medical & Industrial
- Technical Support & Engineering
- Domestic Sales & Marketing
- International Sales & Marketing
- Warehousing
- R&D

# CHINA > SHENZHEN

### China Organisational Structure



### Activities Performed

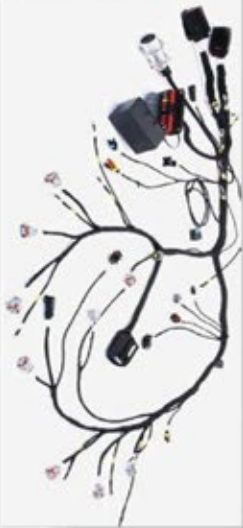
- Sales
- Sourcing
- Domestic & Export Sales
- Logistics



Truly global company with export to more than 70 countries.



**Cable  
Assemblies**



**Overmolded  
Cables**



**Box  
Builds**



**Network  
Solutions**



**Lighting**



**Waterproof  
Interconnect  
Solutions**



**Medical**



# PRODUCTION CAPABILITIES

Ultrasonic Welding



Fiber HDMI



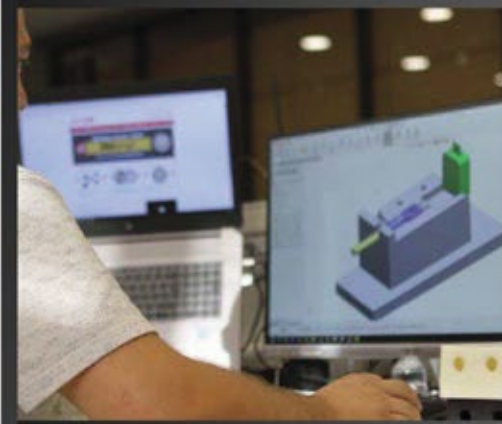
FiberCrimp Machine



Vertical Processing Cnc



R & D



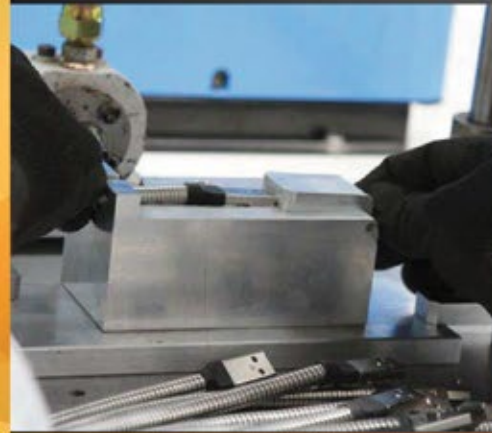
3d Printer



Cable Cutting & Stripping Machine



Low Pressure



Cable Stripping Machine





Soldering



Pad Printing



Capabilities

# PRODUCTION CAPABILITIES

Lazer Cutting



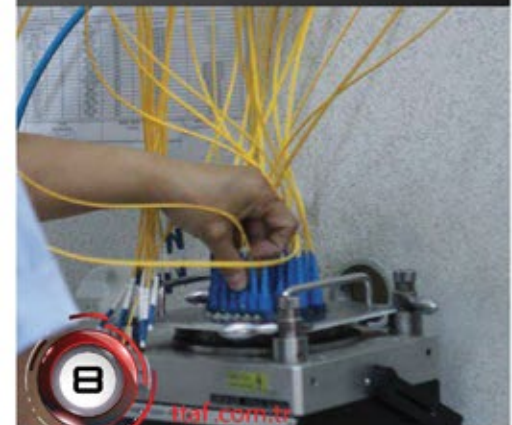
Automatic Cut & Crimping



Lazer Cut & Stripping



Fiber Polish



Fiber Stripping



Automatic Under Cut  
Profile Cutting



Universal Milling





Capabilities

# TEST CAPABILITIES

Pressure Test Tank



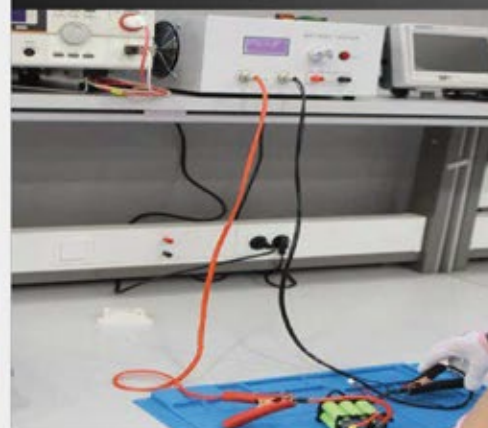
Humid & Temp  
Programmable Tester



Electrical Test



Battery Test



UV Test Cabinet



Water Spray Test



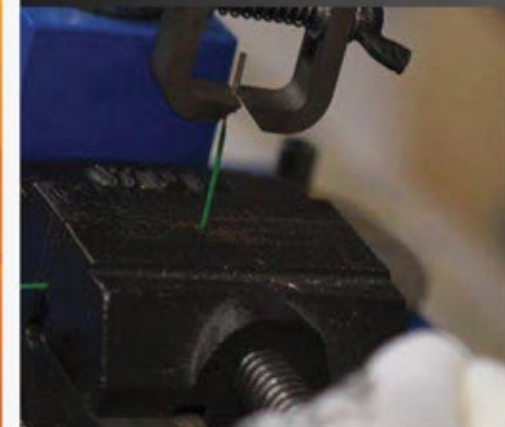
Sand and Dust Test  
Chamber



Compression Test



Terminal Pull Test



Our quality management system is certified in accordance with  
ISO 9001:2015, ISO 14001:2015, 18001:2007; standards.

Quality

HSE (Health, Safety, Environment)

- Periodic controls of lifting vehicles
- Periodic health controls
- Using of protective equipment
- Waste management
- Training





# Product Certificates



# LIGHTING

A long-exposure photograph of a city skyline at night. In the foreground, a multi-lane bridge or highway is filled with light trails from moving vehicles, with white trails for headlights and red trails for taillights. The bridge curves towards the right. In the background, a dense city skyline is visible, with numerous skyscrapers illuminated by their lights. The sky is dark with some wispy clouds. The overall scene is a vibrant representation of urban lighting at night.



## R&D

We provide solutions for lighting needs of professional areas by making mechanical and electrical designs together with optical design in our R&D center by our qualified engineers.



## PRODUCTION

We produce custom design products by means of our state-of-the-art machinery & equipment and our experienced production staff.

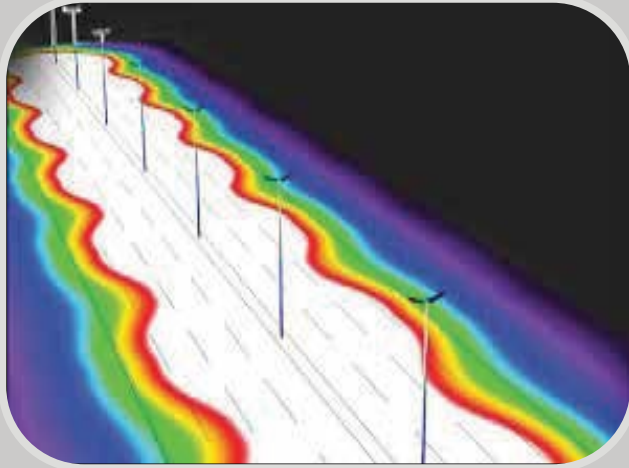


## TEST

We test our products in various ways to achieve high quality and reliable products.

Firstly, we test all our products by exposing them to various electrical tests and harsh climatic conditions in our own laboratory. After all these tests, we certify our products in accredited test laboratories.





## PROJECT AND DESIGN

Project team puts utmost effort to meet customer expectations for each and every project with the same care and delivers the projects within the required time line with a solution as economic as possible.

Our project team makes lighting calculations in Dialux lighting software in line with customer demands and creates the lighting plan of the project.

As a result of all these studies, 3D simulations are presented in the 3Dmax program to present the project as close to reality.





## ROAD & STREET LIGHTING

Lighting

Our lighting fixtures Apus and ESL series are designed for highways, streets and squares. In addition, Apus' decorative side lighting and colorful body options add dynamism to the city. Armegegon, which has a replaceable optical design in both series, provides ease of maintenance & installation and offers maximum energy saving.



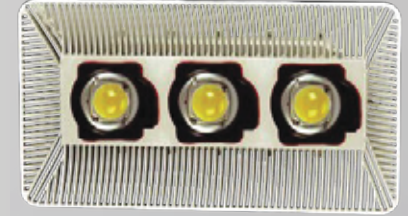
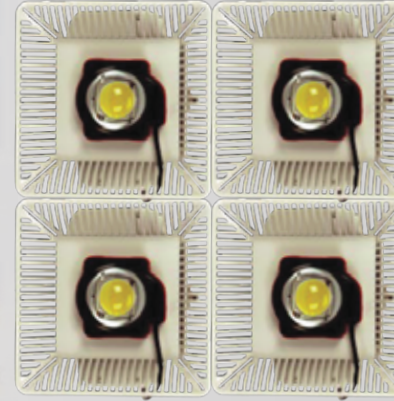
Apus®



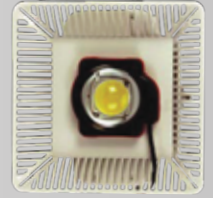


## FLOODLIGHTS

For perfect cooling and low wind resistance, we provided long life and energy savings in our projectors that we combined COB LED module Armageddon with aluminum injection body. It is an ideal choice for lighting factories, warehouses, ports, loading and unloading areas, sports fields and social areas high and low ceilings.



ESL Series



Circinus®



MR Series





## LONG DISTANCE LIGHTING

Our long distance projectors have been developed for use in defense and maritime. Security exploration activities. It can be used for long-range search activities thanks to the high power LEDs and special lenses in the products.

Golyat<sup>®</sup>



Valhalla<sup>®</sup>



Ötüken<sup>®</sup>



Anunaki<sup>®</sup>



Mosotunya<sup>®</sup>

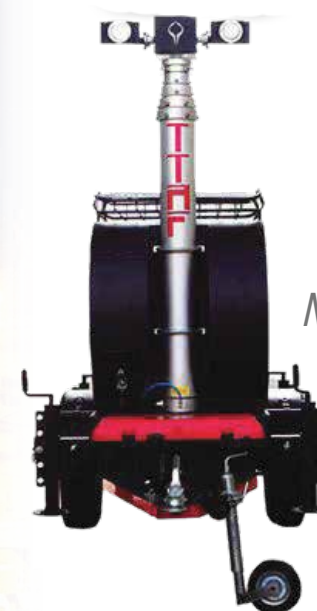


## WIDE AREA LIGHTING

Portable and mobile light towers are designed to illuminate a wide area. It is ideal for lighting wide areas such as construction sites, rescue activities, parks, camping areas.



**Çaylak®**  
*Mobile Lighting*



**Akbaba®**  
*Mobile Lighting*

**Ufled®**  
*Portable Lighting*





## FACADE LIGHTING

Our facade luminaires add prestige to the buildings by giving them an aesthetic appearance in the architecture of the buildings.



**Volans<sup>®</sup>**  
*Linear Lighting*



**Scorpius<sup>®</sup>**  
*Dot Lighting*

## GARDEN LIGHTING

We bring the concept of security and decoration to the fore with our garden lighting that we have developed to enjoy the landscape areas at night.



### *Solar Series*





## FLASHLIGHT

TTAF flashlights series provide high performance light in a light body with its durable structure. It is preferred for emergencies and a variety of hobbies providing the perfect light anytime you need.

ELF01



ELF08



ELF02



ELF09



ELF04



FI F10



ELF03



ELF05-01



ELF05-02



ELF05-03



ELF-06



ELF-07



## GOBO PROJECTOR

Any requested logo, figure or design is applicable.  
With gobo projector, you can display text, logo, design and other images by projecting them on the surface you want to apply.  
Best choice for events, parties / commercial application.



## Gobo Film





thank you

danke 謝謝 ngiyabonga  
спасибо тафетай lava mersi ora barka welalin tack  
vinaka blagodaram dank je misaotra matondo paldies grazzi  
maalo tapadh leat  
hvala maururu koszonom  
nanni nandri kiitos dankie  
dhanyavad  
bedankt bayaralaa gracie  
enkosi  
dziękuje  
sagolun chnorakaloutioun gratias ago gracies  
sulpáy go raibh maith agat  
obrigado sobodi dekuji  
mesidi madloba  
kam sah hamnida rahmat  
najis tuke  
arigatō takk dakujem trugarez  
merci  
merce мерси  
shukriya  
dhanyavadagalau  
diolch  
euχαριστώ  
xiexie  
감사합니다  
merci  
mochchakkeram  
dijere dieuf tau  
dankun dankon aciū  
akun  
mammun  
murekaze  
chokrane  
asante manana  
obrigada  
tenki  
xhala

